

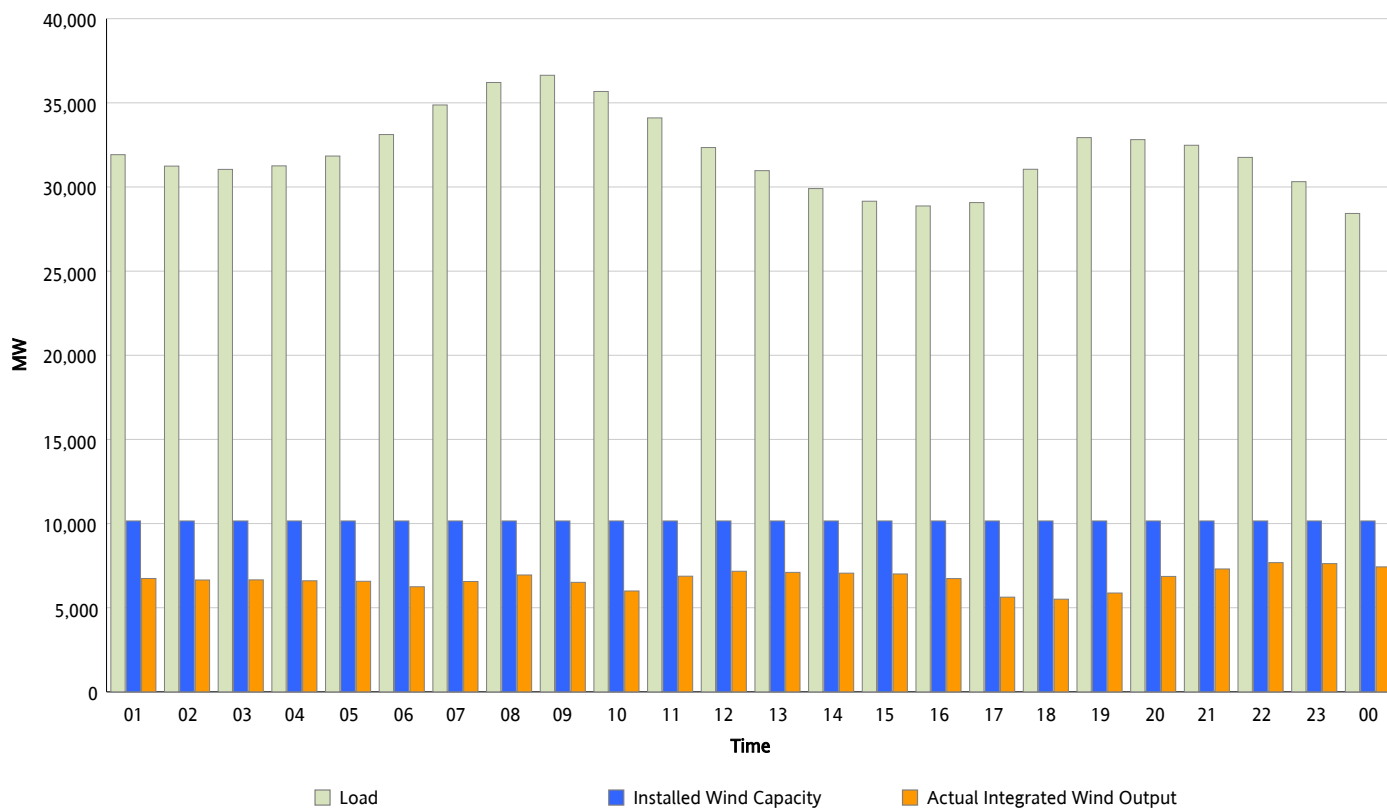


## ERCOT Grid Operations

### Wind Integration Report : 12/22/2012

|                      |           |
|----------------------|-----------|
| Peak Load            | 36,637 MW |
| Load Peak Hour (HE)  | 09        |
| Wind Over Peak       | 6,509 MW  |
| Wind Record 11/10/12 | 8,521 MW  |
| Max Wind Value*      | 7,840 MW  |
| Wind Peak Time       | 21:37     |
| Wind Integration %   | 24.72 %   |

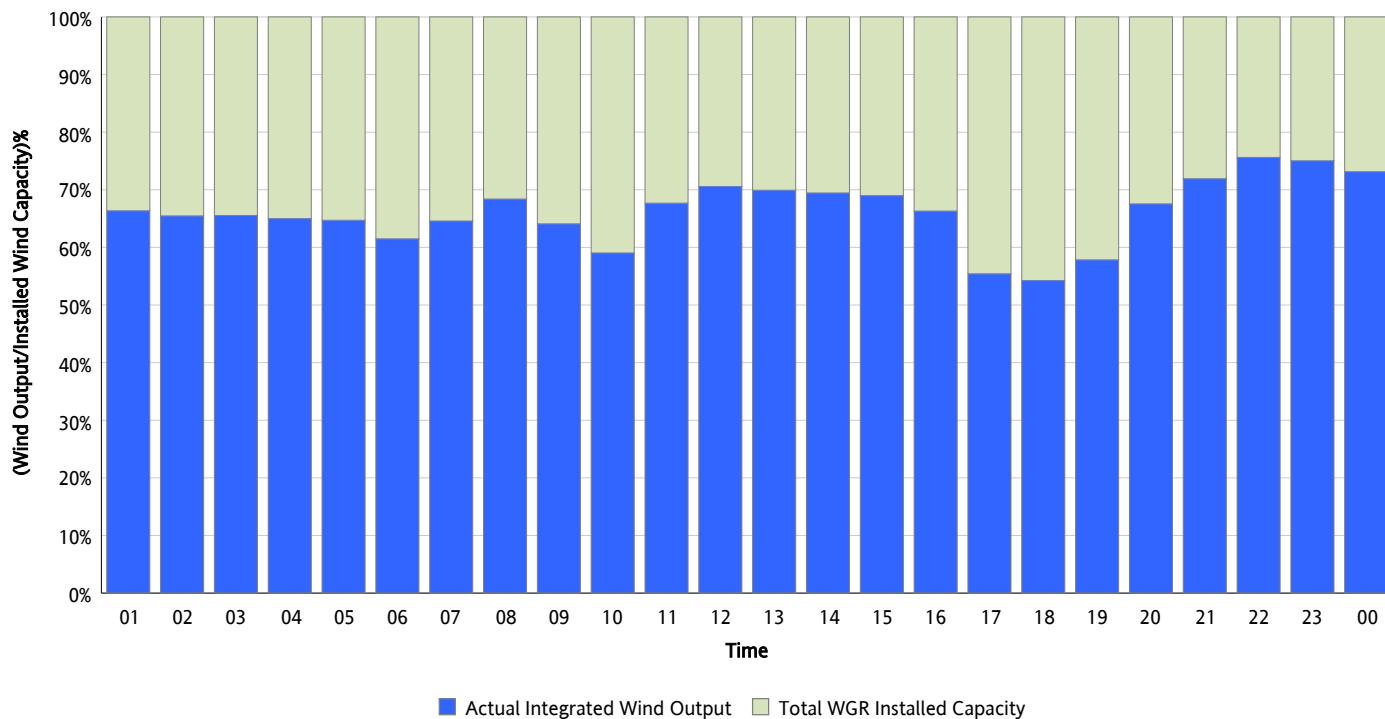
**Hourly Average Actual Load vs. Actual Wind Output**  
**12/22/2012**



\* Wind Record and Wind Max represent instantaneous values and the rest of the values are integrated over the hour

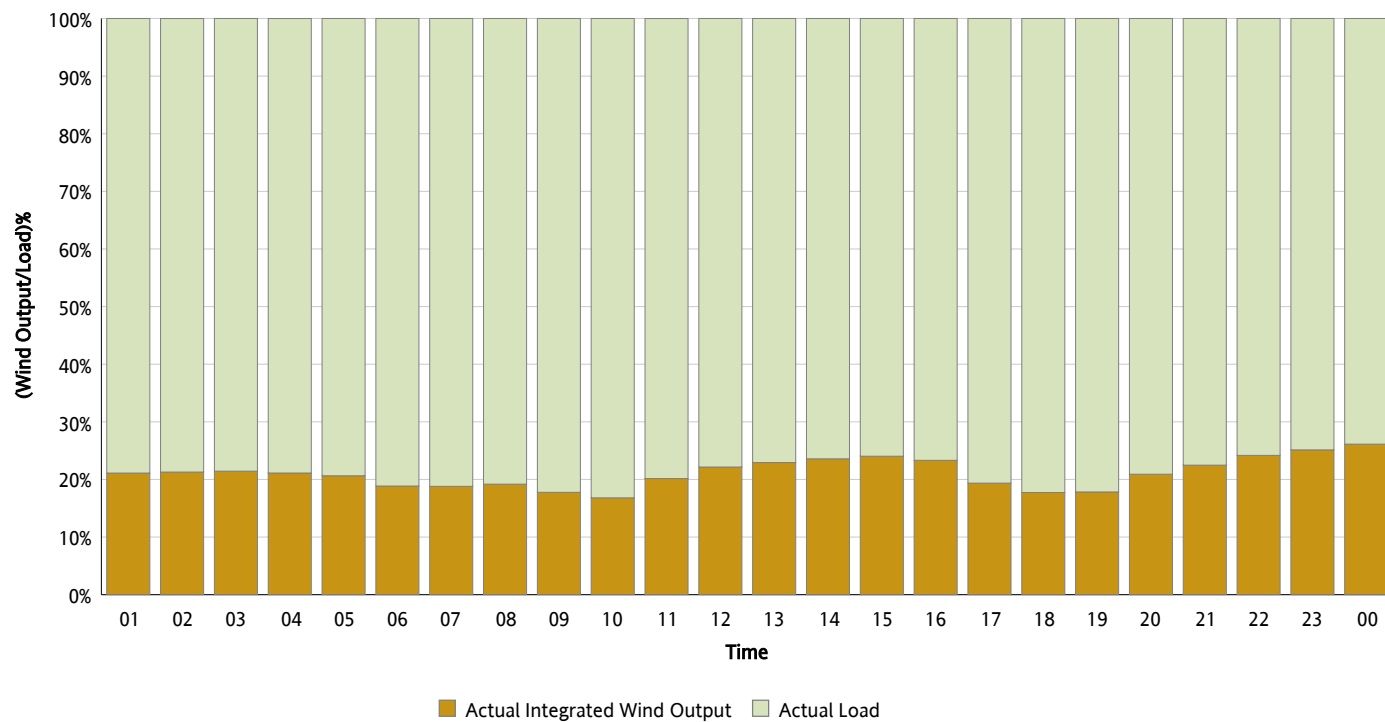
## Actual Wind Output as a Percentage of the Total Installed Wind Capacity

12/22/2012



## Actual Wind Output as a Percentage of the ERCOT Load

12/22/2012



## ERCOT Load vs. Actual Wind Output

12/15/2012 - 12/22/2012

